

Date	Prepared by	Approved by	Document nos	Rev
14 Mar 2024	Ray Ling	Pavel	MBA-LP6C2-IM-001	1

INSTRUCTION MANUAL MS-LP-6-C2

TABLE OF CONTENTS:

1.00 BEAMS & CONNECTORS:

- 1.10 Plan view Resultant Beam & Connector Layout
- 1.20 Connector Ports Table
- 1.30 Connector Detail

2.00 PATTERN DIAGRAM

- 2.10 Horizontal Pattern
- 2.20 Vertical Pattern

3.00 BRACKET INSTALLATION

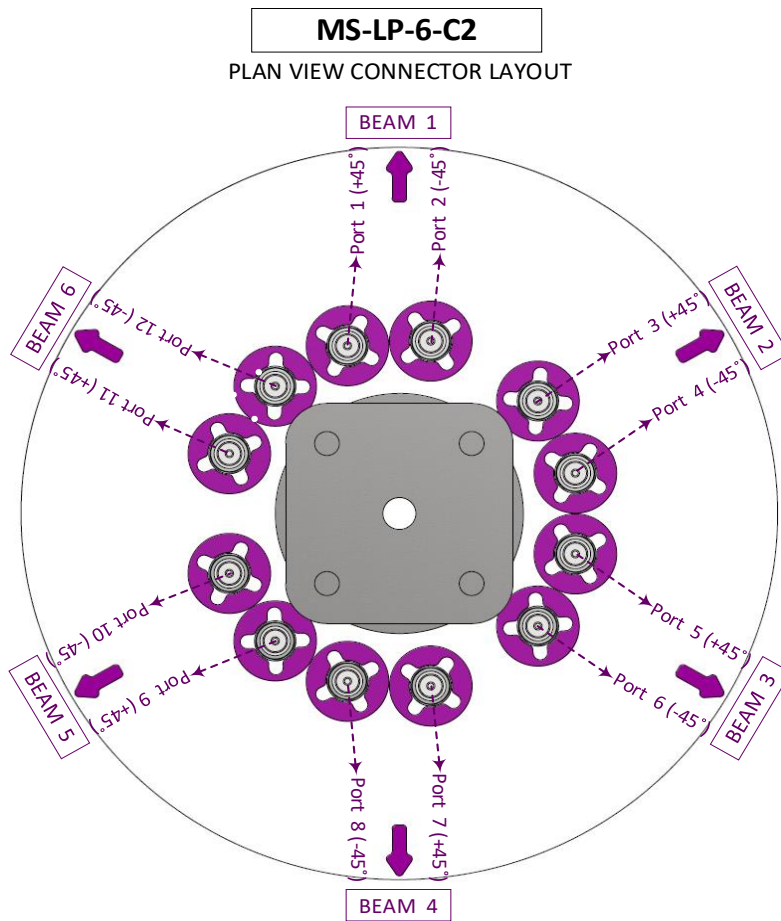
- 3.10 Bolts & Nuts Requirements
 - 3.11 Bracket
 - 3.12 Bolts & Nuts
 - 3.13 Adjustable Spanner (x2)
- 3.20 Antenna Dimensions
- 3.30 Installation Sample

Revision History:

Date	Description	Revised by	Revision nos.
14-Mar-24	General Update	Ray	1

1.00 BEAMS & CONNECTORS:

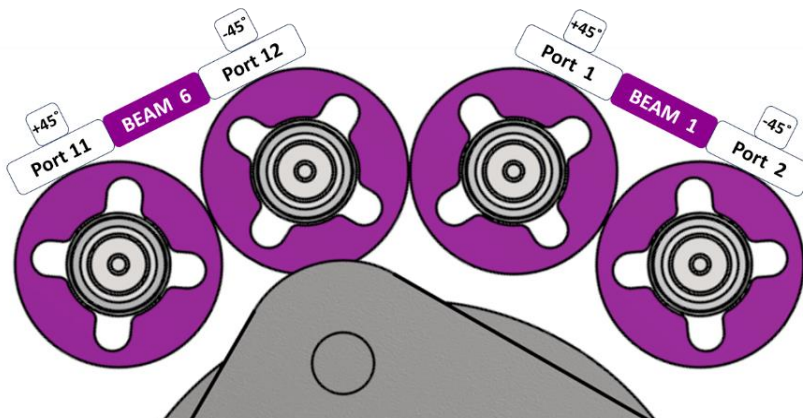
1.10 Plan view Resultant Beam & Connector Layout



1.20 Connector Ports Table

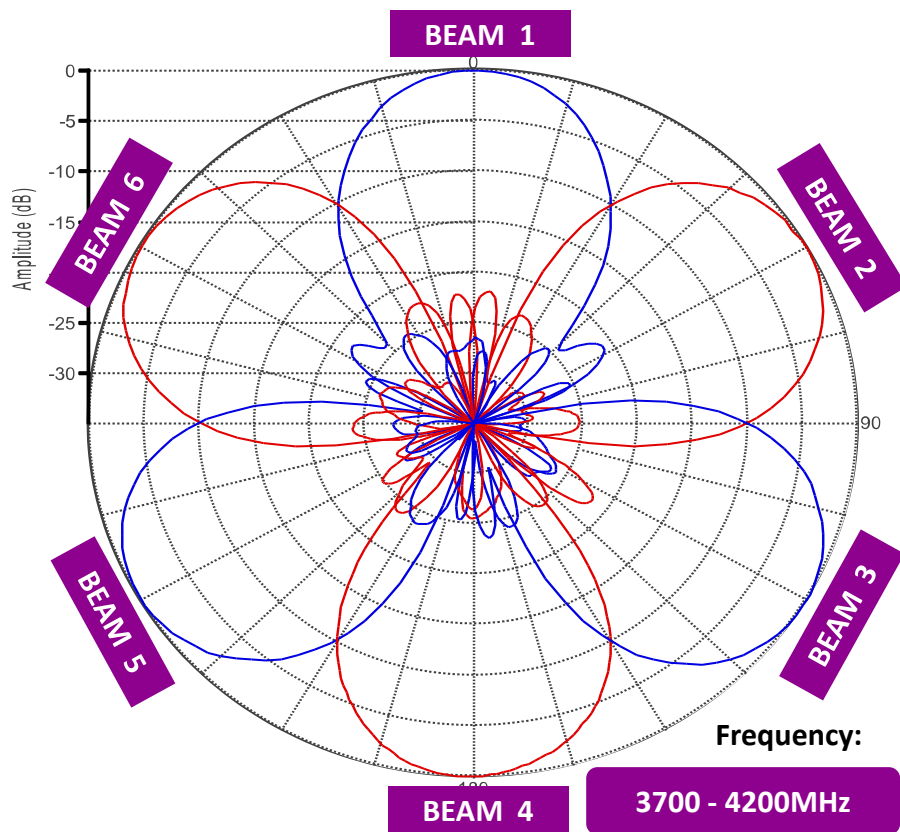
BEAM 1	BEAM 2	BEAM 3	BEAM 4	BEAM 5	BEAM 6
Port 1 (+45°)	Port 3 (+45°)	Port 5 (+45°)	Port 7 (+45°)	Port 9 (+45°)	Port 11 (+45°)
Port 2 (-45°)	Port 4 (-45°)	Port 6 (-45°)	Port 8 (-45°)	Port 10 (-45°)	Port 12 (-45°)

1.30 Connector Detail

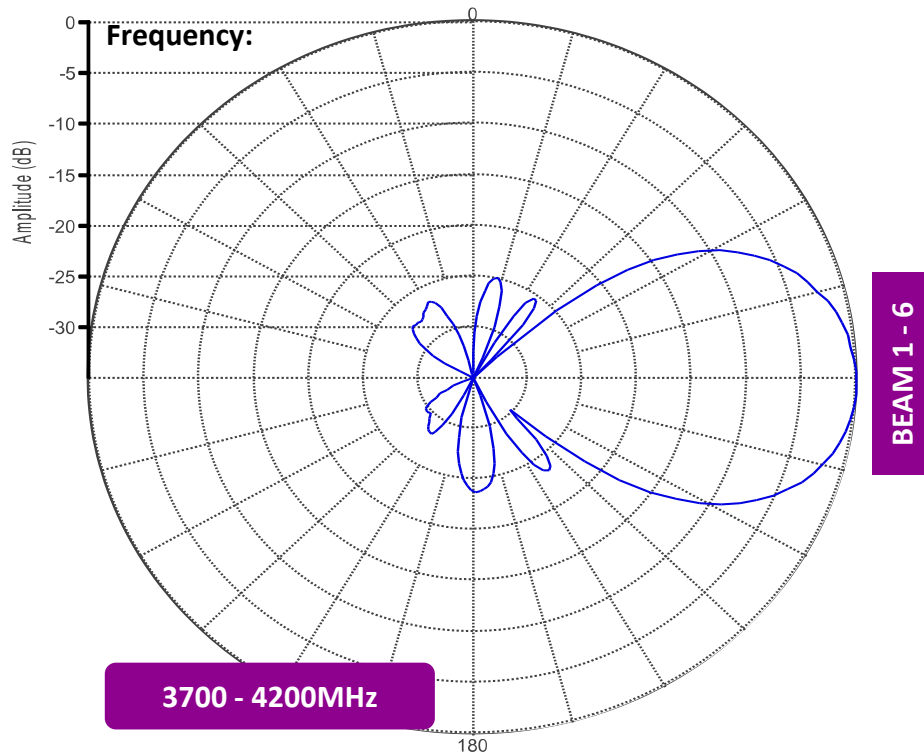


2.00 PATTERN DIAGRAM

2.10 Horizontal Pattern



2.20 Vertical Pattern



3.00 BRACKET INSTALLATION

3.10 Bolts & Nuts Requirements

nos	Bracket	Base Plate Bolts & Nuts Sets		Structure Bolts & Nuts Sets	
	Qty	Size	Qty	Size	Qty
1	4	M10 x 25mm	4	M12 x 160mm	4

3.11 Bracket



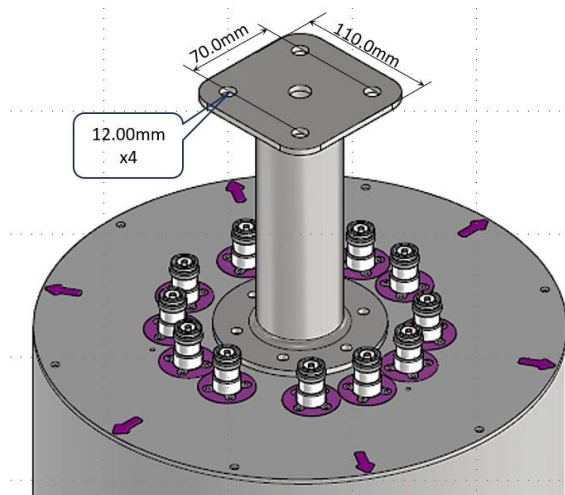
3.12 Bolts & Nuts



3.13 Adjustable Spanner (x2)

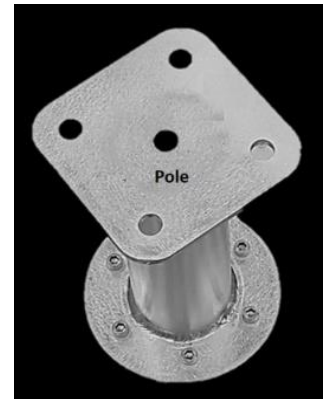


3.20 Antenna Dimensions



3.30 Installation Sample

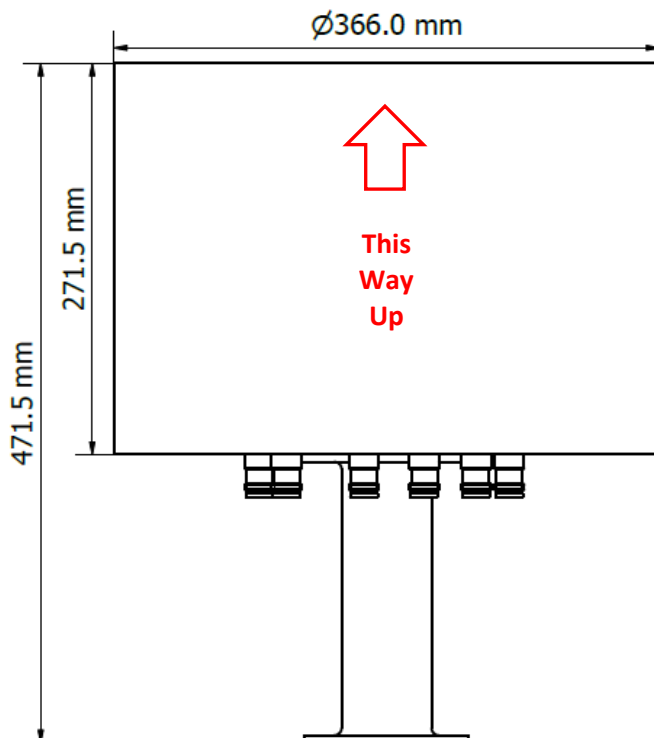
Step 1



Step 2



Step 3



WARNING:

*Do not mount this antenna Up Side Down.
Drainage hole at the bottom.*